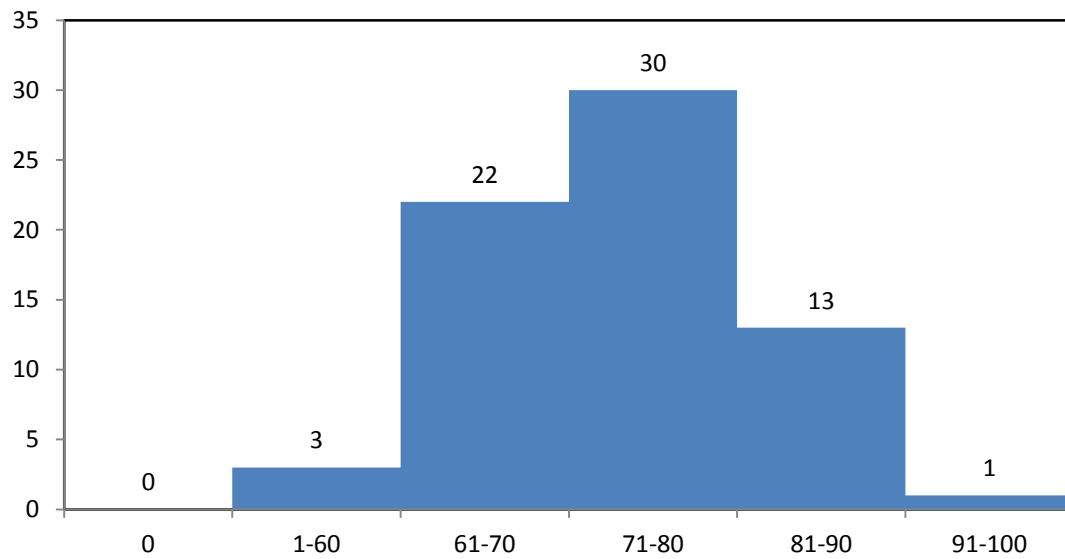


## ME108C Statics\_2012



The average score was 72.2 out of 100.

Standard deviation: 9.1

$(\text{HW\_Large\_7})/7*0.2+(\text{QZ\_Large\_5})/5*0.2+\text{Midterm}*0.3+\text{Final}*0.3+\text{Add.} =$

A: 81-100 => 14

B: 70-80 => 33

C: 60-69 => 19

D: under 60 => 3